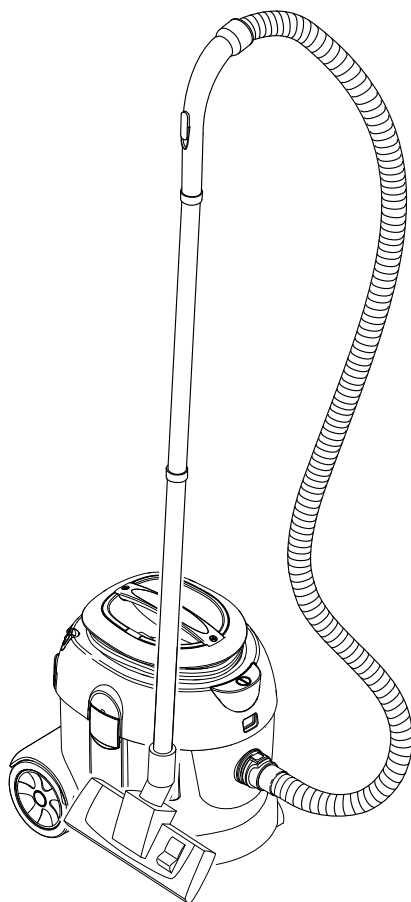


T 17/1
T 17/1 eco!efficiency

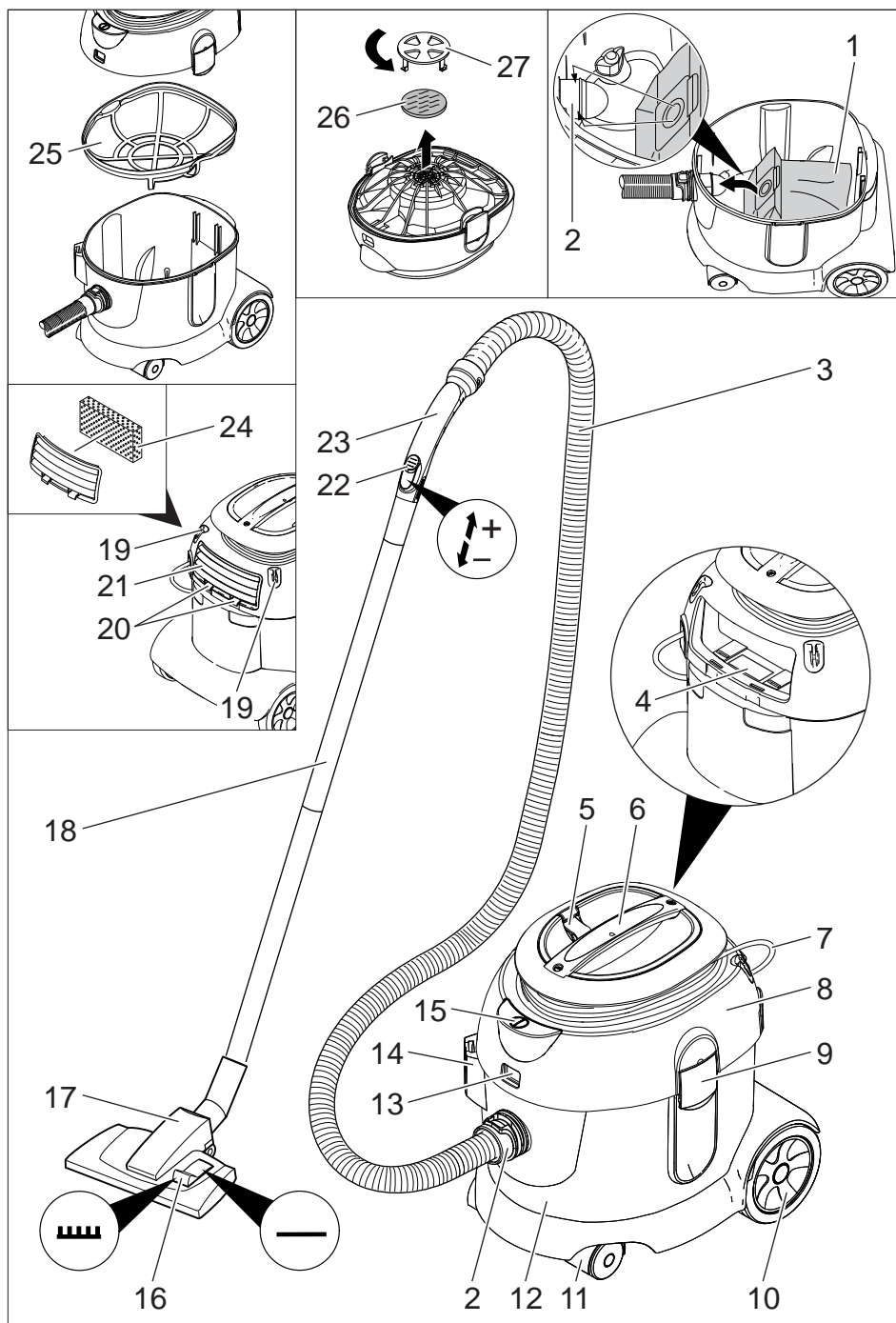


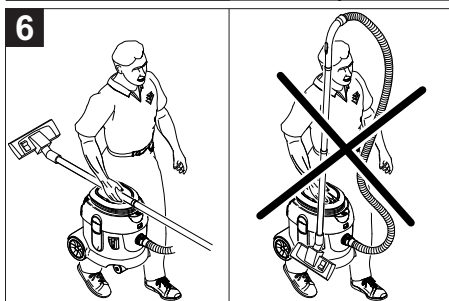
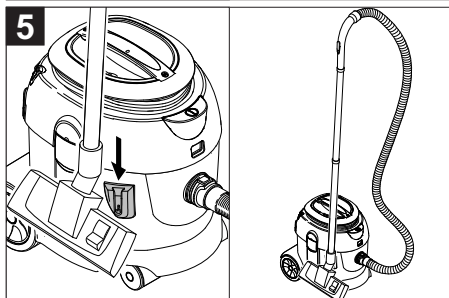
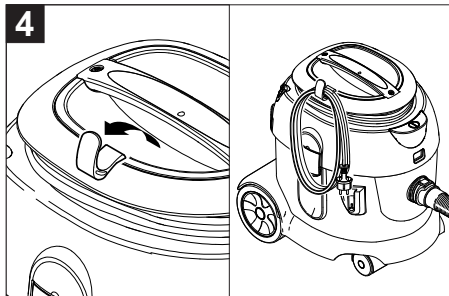
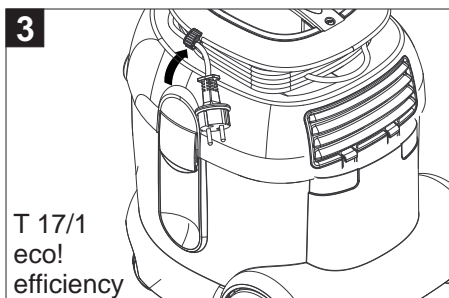
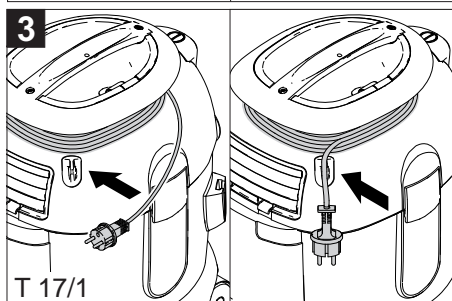
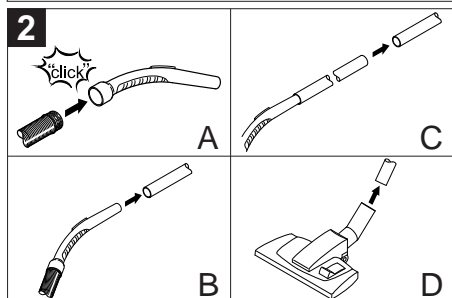
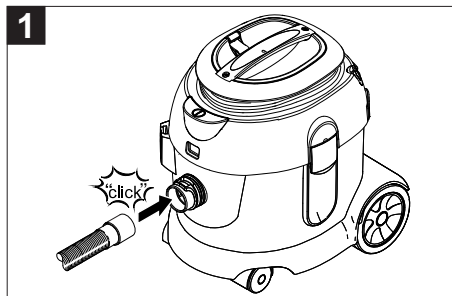
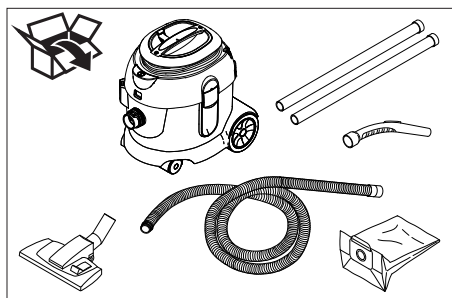
Deutsch	5
English	10
Français	15
Italiano	20
Nederlands	25
Español	30
Português	35
Dansk	40
Norsk	45
Svenska	50
Suomi	55
Ελληνικά	60
Türkçe	66
Русский	71
Magyar	77
Čeština	82
Slovenščina	87
Polski	92
Românește	97
Slovenčina	102
Hrvatski	107
Srpski	112
Български	117
Eesti	123
Latviešu	128
Lietuviškai	133
Українська	138
中文	144

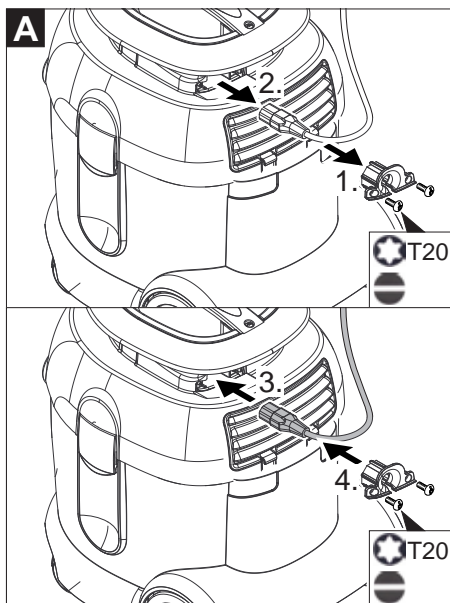
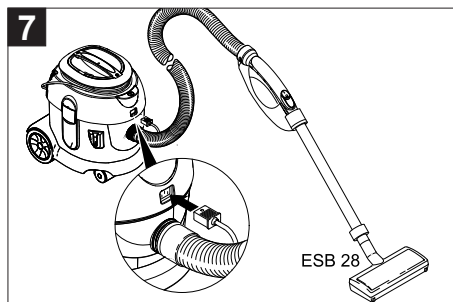
Register and win!
www.karcher.com/register-and-win



59648810 08/13b









Please read and comply with these original instructions prior to the initial operation of your appliance and store them for later use or subsequent owners.

- Before first start-up it is definitely necessary to read the safety indications Nr. 5.956-249!
- The non-compliance of the operating and safety instructions may lead to damages of the appliance and to dangers for the operator and other persons.
- In case of transport damage inform vendor immediately

Contents

Environmental protection . .	EN . . . 1
Symbols in the operating instructions	EN . . . 1
Proper use	EN . . . 1
Device elements.	EN . . . 2
Start up.	EN . . . 2
Operation	EN . . . 2
Transport	EN . . . 2
Storage.	EN . . . 3
Maintenance and care . . .	EN . . . 3
Troubleshooting	EN . . . 3
Warranty.	EN . . . 4
Accessories and Spare Parts	EN . . . 4
EC Declaration of Conformity	EN . . . 4
Technical specifications . .	EN . . . 5

Environmental protection



The packaging material can be recycled. Please do not throw the packaging material into household waste; please send it for recycling.



Old appliances contain valuable materials that can be recycled; these should be sent for recycling. Batteries, oil, and similar substances must not enter the environment. Please dispose of your old appliances using appropriate collection systems.

Notes about the ingredients (REACH)

You will find current information about the ingredients at:

www.kaercher.com/REACH

Symbols in the operating instructions

Danger

Immediate danger that can cause severe injury or even death.

Warning

Possible hazardous situation that could lead to severe injury or even death.

Caution

Possible hazardous situation that could lead to mild injury to persons or damage to property.

Proper use

Warning

The appliance is not suitable for vacuuming dust which endangers health.

Caution

This unit is only to be used indoors.

- This vacuum cleaner is meant for dry cleaning of floors and walls.
- This appliance is suited for the commercial use, e.g. in hotels, schools, hospitals, factories, shops, offices, and rental companies.

Device elements

- 1 Fleece filter bag
- 2 Suction support
- 3 Suction hose
- 4 Nameplate
- 5 Cable hook
- 6 Carrying handle
- 7 Power cord
- 8 Suction head
- 9 Suction head lock
- 10 Wheel
- 11 Steering roller
- 12 Dirt receptacle
- 13 Socket for electric vacuum brush
- 14 Pickup for floor nozzle
- 15 Main switch
- 16 Switch between hard surface/carpet
- 17 Floor nozzle
- 18 Suction tube
- 19 Mains plug holder
- 20 Lid lock
- 21 Cover
- 22 Suction force regulator (continuous)
- 23 Bender
- 24 Exhaust filter
- 25 Main filter basket
- 26 Motor protection filter
- 27 Grid of the motor protection filter

Colour coding

- The operating elements for the cleaning process are yellow.
- The controls for the maintenance and service are light gray.

Start up

The appliance can be operated in 2 ways:

- 1 Operation with fleece filter bag or paper filter bag (option)
 - 2 Operation without filter bag
- Check whether main filter basket has been inserted into the appliance.

Installation of the filter bag

- Release and remove the suction head.
- Remove the main filter basket.
- Install the fleece filter bag or the paper filter bag (option).
- Insert main filter basket.
- Insert and lock the suction head.

Operation

Turning on the Appliance

- Plug in the main plug.
- Switch on the appliance at the main switch.

Cleaning operations

- Set the selection switch of the floor nozzle to hard surface or carpet.
- Regulate the suction force on the suction force regulator (continuous).
- Perform the cleaning operation.

Turn off the appliance

- Switch off the appliance at the main switch.
- Pull out the mains plug.

After each operation

- Empty the container.
- Vacuum and wipe the appliance inside and outside with a damp cloth.

Transport

Caution

Risk of injury and damage! Observe the weight of the appliance when you transport it.

- When transporting in vehicles, secure the appliance according to the guidelines from slipping and tipping over.

Storage

Caution

Risk of injury and damage! Note the weight of the appliance in case of storage.

This appliance must only be stored in interior rooms.

Maintenance and care

Danger

First pull out the plug from the mains before carrying out any tasks on the machine.

Clean main filter basket

- Main filter basket (washable), clean it under running water if necessary.

Caution

Risk of damage! Never insert the main filter basket while wet.

Replace exhaust filter

Exhaust filter: Change once a year

- Release and remove the cover.
- Replace exhaust filter.
- Install and lock the cover.

Replace motor protection filter

- Release and remove the suction head.
- Push the grids of the motor protection filter down, turn and remove.
- Remove the motor protection filter.
- Insert the new motor protection filter.
- Insert the grid of the motor protection filter and lock it into place.
- Insert and lock the suction head.

Replacing the mains cable

Only T 17/1 ecoefficiency:

Illustration 

Troubleshooting

Danger

First pull out the plug from the mains before carrying out any tasks on the machine.

The appliance shuts off during the operation

- Motor thermal protector has responded.
 - Replace the fleece filter bag or paper filter bag (option).
 - Replace motor protection filter.
 - Replace exhaust filter.
 - Check all parts for plugging.
- Switching back on after the motor turbine has cooled off, after approx. 30 to 40 minutes.

Suction turbine does not run

- Check the receptacle and the fuse of the power supply.
- Check the power cable and the power plug of the device.
- Turn on the appliance.

Suction capacity decreases

- Remove choking of suction nozzle, suction tube or suction hose.
- Replace the fleece filter bag or paper filter bag (option).
- Clean the main filter basket under running water.
- Insert/lock the suction head correctly.
- Replace defective suction hose.
- Replace motor protection filter.

Dust comes out while vacuuming

- ➔ Replace the fleece filter bag or paper filter bag (option).
- ➔ Check the fleece filter bag or paper filter bag (option).
- ➔ Insert/lock the suction head correctly.
- ➔ Insert undamaged main filter basket.
- ➔ Reinsert motor protection filter correctly.

Warranty

The warranty terms published by the relevant sales company are applicable in each country. We will repair potential failures of your appliance within the warranty period free of charge, provided that such failure is caused by faulty material or defects in manufacturing. In the event of a warranty claim please contact your dealer or the nearest authorized Customer Service centre. Please submit the proof of purchase.

Accessories and Spare Parts

- Only use accessories and spare parts which have been approved by the manufacturer. The exclusive use of original accessories and original spare parts ensures that the appliance can be operated safely and trouble free.
- At the end of the operating instructions you will find a selected list of spare parts that are often required.
- For additional information about spare parts, please go to the Service section at www.kaercher.com.

EC Declaration of Conformity

We hereby declare that the machine described below complies with the relevant basic safety and health requirements of the EU Directives, both in its basic design and construction as well as in the version put into circulation by us. This declaration shall cease to be valid if the machine is modified without our prior approval.

Product: Dry vacuum cleaner

Type: 1.355-xxx

Relevant EU Directives

2006/42/EC (+2009/127/EC)

2004/108/EC

Applied harmonized standards

EN 55014-1: 2006+A1: 2009+A2: 2011

EN 55014-2: 1997+A1: 2001+A2: 2008

EN 60335-1

EN 60335-2-69

EN 61000-3-2: 2006+A1: 2009+A2: 2009

EN 61000-3-3: 2008

EN 62233: 2008

Applied national standards

-

5.957-594

The undersigned act on behalf and under the power of attorney of the company management.



H. Jenner
CEO




S. Reiser
Head of Approbation

Authorised Documentation Representative
S. Reiser

Alfred Kärcher GmbH Co. KG
Alfred-Kärcher-Str. 28 - 40
71364 Winnenden (Germany)
Phone: +49 7195 14-0
Fax: +49 7195 14-2212

Winnenden, 2013/05/01

Technical specifications

		T 17/1	T 17/1 eco! efficiency
Mains voltage	V	220-240	220-240
	V	CN: 220	--
Frequency	Hz	1~ 50/60	1~ 50/60
Max. performance	W	1400	1000
Container capacity	l	17	17
Air volume (max.)	l/s	61	43
Negative pressure (max.)	kPa (mbar)	24,4 (244)	22,9 (229)
Power connection value of the electric vacuum brush (max.)	W	250	250
Protective class		II	II
Suction hose connection (C-DN/C-ID)	mm	32	32
Length x width x height	mm	440 x 315 x 420	440 x 315 x 420
Typical operating weight	kg	7,1	7,0
Max. ambient temperature	°C	+40	+40
Values determined to EN 60335-2-69			
Sound pressure level L_{pA}	dB(A)	65	56
Uncertainty K_{pA}	dB(A)	1	1
Hand-arm vibration value	m/s ²	<2,5	<2,5
Uncertainty K	m/s ²	0,2	0,2

Power cord T 17/1	H05VV-F 2x1,0 mm ²	
	Part no.:	Cable length
EU	6.649-655.0	12 m
CN	6.649-651.0	12 m

Power cord T 17/1 eco! efficiency	H05VV-F 2x1,0 mm ²	
	Part no.:	Cable length
EU	6.649-743.0	12 m